

TAG: _____

SUBMITTAL

18 SERIES

Single Zone Mini-Split Inverter System

M4MLW1824A1N0B

M4TLS1824A11NB

Specifications

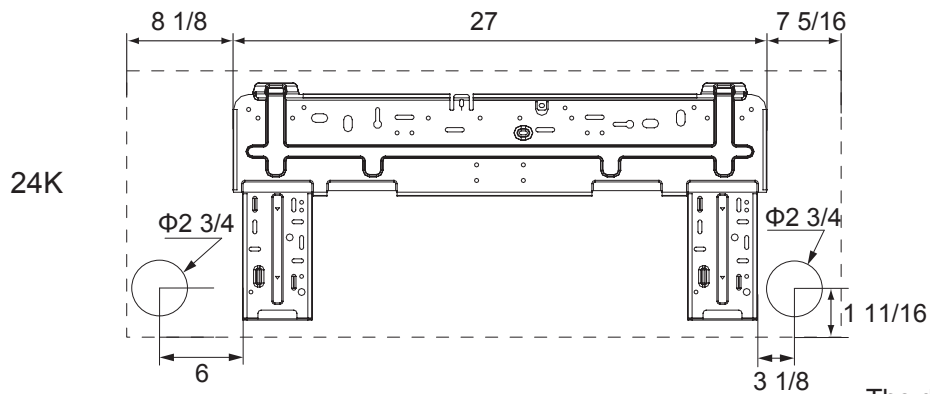
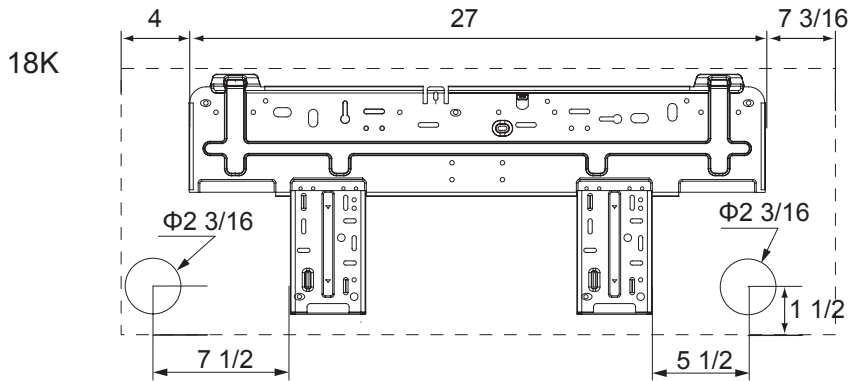
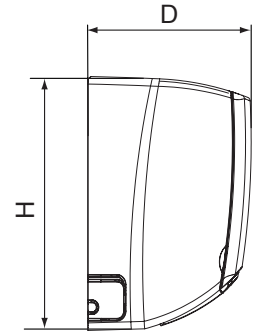
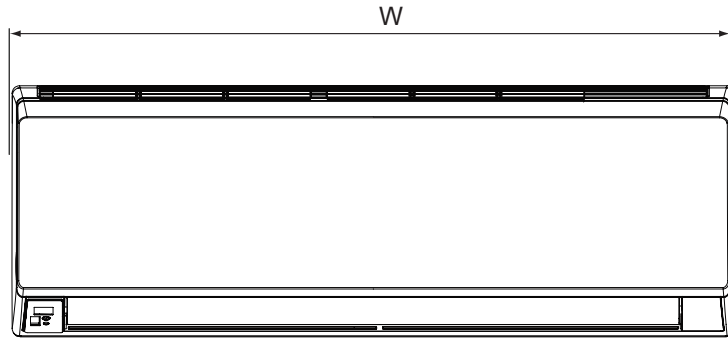
MODEL - Heat Pump Only	M4MLW1824A / M4TLS1824A	
	Cooling	Heating
RATED Volts/PH	208 / 230 / 1	
Frequency (Hz)	60Hz	
Rated Cooling / Heating Capacity (Btu/h):	22800	25000
Minimum Cooling Capacity (@95F) (Btu/h):	8600	-
Maximum Cooling Capacity (@95F) (Btu/h):	24000	-
Minimum Heating Capacity (@47F) (Btu/h):	-	8600
Maximum Heating Capacity (@47F) (Btu/h):	-	26000
Maximum Heating Capacity (@17F) (Btu/h):	-	16000
Total Capacity (W) (High/Standard/Low):	7034 / 6450 / 2500	7600 / 7034 / 2500
Rated Power Input (W)	2010	2130
Nominal Input Current (A)	8.92	9.45
SEER / HSPF	18.4	10.5
Air Flow Volume (CFM) (H/M/L)	1200 / 1050 / 900 / 750	
Dehumidifying Volume (pt./h)	4.2	
EER (Btu/W hr)/COP	11.0	3.3
Indoor Unit		
	M4MLW1824A1N0	
Fan Motor Speed (r/min) (SH/H/M/L)	1300 / 1150 / 1000 / 850	1300 / 1150 / 1000 / 850
Fan Motor RLA(A)	0.32	
Evaporator	Aluminum Fin-Copper Tube	
Pipe Diameter (inch)	0.286	
Row Fin Gap (inch)	2 - 0.059	
Coil length (L) x depth (D) x coil width (W) (inch)	33.25 x 1.0 x 13.5	
Output of Swing Motor (W)	2.5	
Fuse (A)	3.15	
Sound Power Level dB (A)(SH/H/M/L)	63 / 59 / 56 / 52	
Sound PRESSURE Level dB (A)(SH/H/M/L) ①	49 / 46 / 42 / 36	
Uncrated Dimension (W/H/D) (inch)	42.4 x 12.8 x 9.7	
Crated Dimension of Package (L/W/H) (inch)	45.2 x 16.3 x 13.8	
Net Weight /Gross Weight (lbs)	37.5 / 45.2	
Outdoor Unit		
	M4TLS1824A11N	
Compressor Type	Rotary	
Compressor Oil	RB68EB (POE Oil)	
L.R.A. (A)	25.0	
Compressor RLA(A)	12.18	
Compressor Power Input(W)	1440	
Throttling Method	EEV	
Working Temp Range (°F)	0 - 115	-13 - 75
Condenser	Aluminum Fin-Copper Tube	
Pipe Diameter (inch)	0.28	
Row Fin Gap (inch)	1 - 0.055	
Coil length (l) x depth (D) x coil width (W) (inch)	36.8 x 1.5 x 26	
Fan Motor Speed (rpm)	800	
Output of Fan Motor (W)	60	
Fan Motor RLA (A)	0.40	
Air Flow Volume of Outdoor Unit (CFM)	3200	
Fan Diameter (inch)	20.5	
Defrosting Method	Automatic Defrosting	
Sound Power Level dB (A)	68	
Sound PRESSURE Level dB (A) ①	58	
Uncrated Dimension (W/H/D) (inch)	37.6 x 27.6 x 15.6	
Crated Dimension of Package (W/L/H) (inch)	40.5 x 18 x 29.5	
Net Weight /Gross Weight (lbs)	103.6 / 113.5	
Refrigerant Charge (oz)	56.4	
MCA	16.0	
MOP	25.0	
Connection Pipe		
Refrigerant additional charge(oz/ft)	0.54	
Outer Diameter Liquid Pipe (inch)	1/4	
Outer Diameter Gas Pipe (inch)	5/8	
Max Height Distance (ft)	66	
Max Length Distance (ft)	100	

① Sound PRESSURE Level @ 3.3 ft. dB(A)

Unit Dimensions

Indoor Unit Dimensions, continued

18K-24K Indoor Units



The dimensions in these drawings are rounded according to standard measurement.

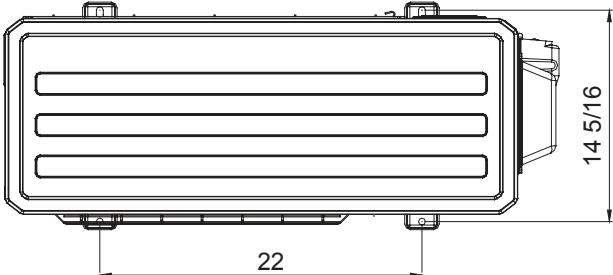
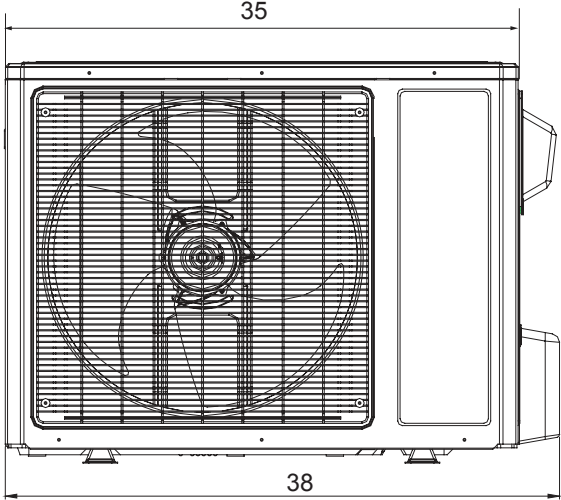
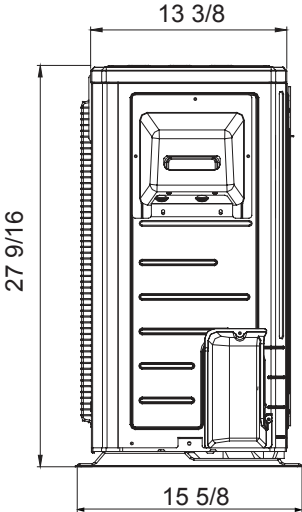
Unit: inch

Models	W	H	D
18K	38 3/16	11 13/16	8 13/16
24K	42 7/16	12 13/16	9 11/16

Unit Dimensions

Outdoor Unit Dimensions

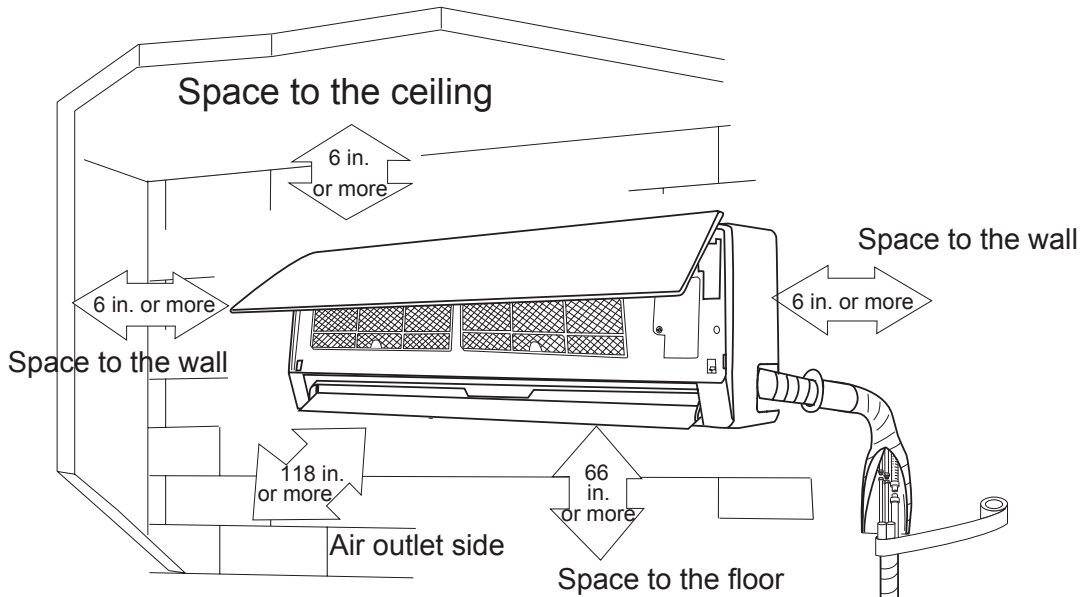
18K-24K Outdoor Units



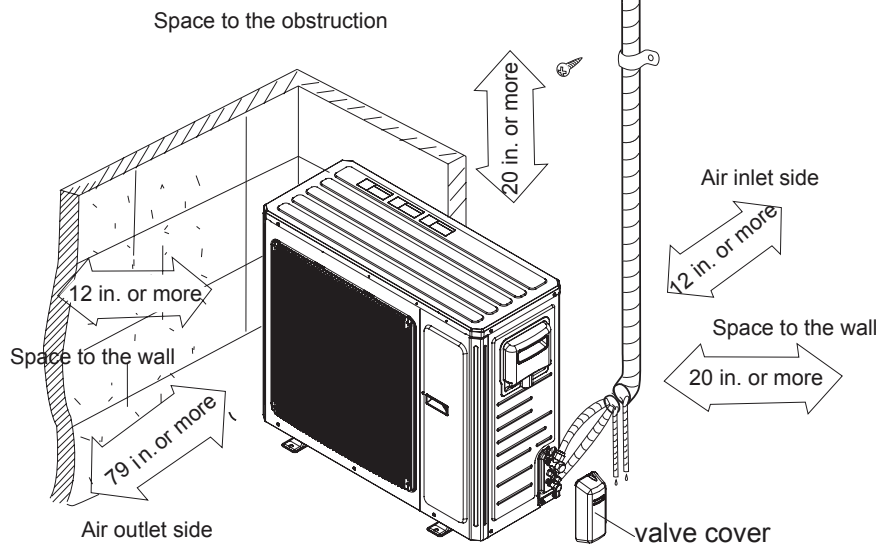
The dimensions in these drawings are rounded according to standard measurement.

Unit: inch

Clearance Requirements



The dimensions of the space necessary for correct installation of the appliance including the minimum permissible distances to adjacent structures



NOTE:

The maximum recommended height from the floor to the bottom of the indoor unit is 11.5 ft. (3.5 m).

Air Velocity Patterns for High Wall		
Max Horizontal Distance		
Unit: ft. (m)		
Model	Cooling Mode	Heating Mode
M4MLW1824A	31.2 (9.5)	23 (7)

Performance Data

M4TLS1824A1/M4MLW1824A1 - Cooling Mode Performance Data

Outdoor Ambient Air Temperature (°F)	Indoor Entering Air Temperature (Dry Bulb/Wet Bulb)							
	68/57°F		73/61°F		79/64°F		80/67°F	
	TC*	SHC**	TC	SHC	TC	SHC	TC	SHC
0	16400	12900	17500	13700	20000	15700	20400	16000
10	17400	13700	18500	14500	21000	16400	21700	17000
20	18100	14200	19300	15100	22000	17200	22900	18000
30	19100	15000	20500	16100	23300	18300	24500	19200
40	20400	16000	22000	17200	24600	19300	26300	20600
50	20400	16000	21900	17200	24300	19100	26200	20600
55	20400	16000	21800	17100	24000	18800	26100	20500
60	20400	16000	21800	17100	23800	18600	25900	20300
65	20500	16100	21800	17100	23500	18400	25400	19900
70	20400	16000	21700	17000	23200	18200	24900	19600
75	19900	15600	21200	16600	23000	18000	24600	19300
80	19600	15400	20800	16300	22700	17800	24400	19100
85	19300	15200	20600	16200	22500	17600	24100	18900
90	19100	14900	20400	16000	22200	17400	24000	18800
95	18800	14700	20100	15800	22000	17300	24000	18800
100	18400	14400	19700	15500	21800	17100	23700	18600
105	18100	14200	19400	15200	21700	17000	23400	18300
110	17800	14000	19100	15000	21400	16800	23100	18100
115	17500	13800	18900	14800	21100	16600	22800	17900

*Total Capacity **Sensible Heat Capacity

M4TLS1824A1/M4MLW1824A1 - Heating Mode Performance Data

Outdoor Ambient Air Temperature (°F)	Indoor Entering Air Temperature			
	68°F	73°F	80°F	82°F
	TC*	TC	TC	TC
-13	14100	13900	13600	13300
-10	15000	14700	14500	14100
-5	15900	15600	15300	15000
0	17400	17100	16800	16400
5	18200	17900	17600	17200
10	19100	18800	18400	18000
15	19600	19300	18900	18500
20	20300	20000	19600	19200
25	21400	21100	20700	20300
30	21800	21500	21100	20700
35	22100	21800	21500	21100
40	22500	22200	21900	21500
45	23700	23400	23000	22500
50	24400	23900	23500	22900
55	24700	24200	23800	23200
60	25100	24700	24200	23600
65	25700	25200	24700	24100
70	26100	25600	25100	24500
75	26400	26000	25400	24800

*Total Capacity

Capacities in these performance tables reflect normal operation at the temperatures indicated. See specification tables for certified values under prescribed test conditions.

Mechanical Specifications

Mini-Split Outdoor Unit

General

This unit is fully charged from the factory for up to 25 feet of piping. This unit is designed to operate at outdoor ambient temperatures as high as 115°F. Cooling capacities with the mini-split air handler shown in the catalog are AHRI certified. The unit is ETL listed for outdoor application.

Unit Casing

The unit casing is constructed of heavy gauge, galvanized steel and painted with a weather-resistant powder paint.

Mini-Split Indoor High Wall

General

The High Wall mounted type air handler shall be completely factory assembled including coil, condensate drain pan, fan motor, washable filter, air purifying filter and electric controls to be used with a wireless remote controller. Unit shall be shipped with a unit mounting plate. Unit shall be matched with an outdoor unit, rated and tested in accordance with AHRI standard. Unit shall be ETL listed.

Unit Casing

Casing shall be provided with knockouts on the right, and left of the unit to facilitate piping and electrical connection on either side of the unit. An electrical service cover shall be provided to permit easy access to the electrical terminal strip.

Refrigerant Controls

The compressor motor and condenser fan motor are controlled and monitored by an integrated electronic module. Additionally, the same module monitors sensors to control refrigerant flow through the sealed system as well as air flow.

Compressor

The compressor features internal over temperature and pressure protection; total dipped hermetic motor windings. Other features include: centrifugal oil pump and low vibration and noise.

Discharge Airflow and Distribution System

Unit shall have auto swing, dual horizontal blades to optimize the aperture outlet for vertical airflow and air distribution. Blade shall close automatically when the air conditioner is turned off to minimize dust entering the unit. Five-Step preset program on the remote controller shall be available to control the blade angle.

Manually adjusted wide-angle louvers shall be provided to adjust the coverage and direction of airflow.

Controls

Units shall have the capability to be controlled remotely through wall-mounted wired options (**sold separately**) as well as a wireless remote option.

Condenser Coil

The condenser coil is constructed from aluminum plate fins and copper tubing. The coil provides air flow resistance and efficient heat transfer.

Low Ambient Operation

Matched ductless products, have cooling capabilities at outdoor ambient temperatures as low as 0° F and heating capabilities at outdoor ambient temperatures as low as -13° F.

Remote Controller

The unit shall have a wireless infrared remote controller with easy reading digital display panel to start, stop and regulate the air conditioner from a distance.

The wireless controller is included with all units.

Healthy Filters

The unit shall have an active carbon and catechin filter with the unit. The filters need to be cleaned at least once a year.

About Trane and American Standard Heating and Air Conditioning

Trane and American Standard create comfortable, energy efficient indoor environments for residential applications. For more information, please visit www.trane.com or www.americanstandardair.com



The AHRI Certified mark indicates company participation in the AHRI Certification program. For verification of individual certified products, go to ahridirectory.org.

The manufacturer has a policy of continuous data improvement and it reserves the right to change design and specifications without notice. We are committed to using environmentally conscious print practices.